

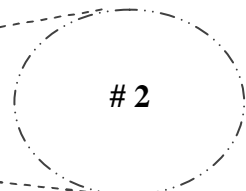
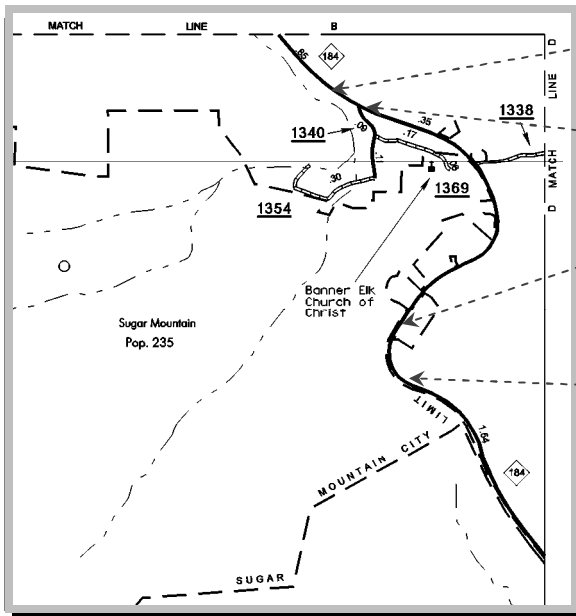
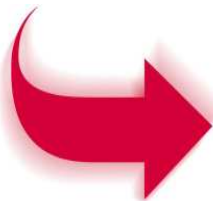
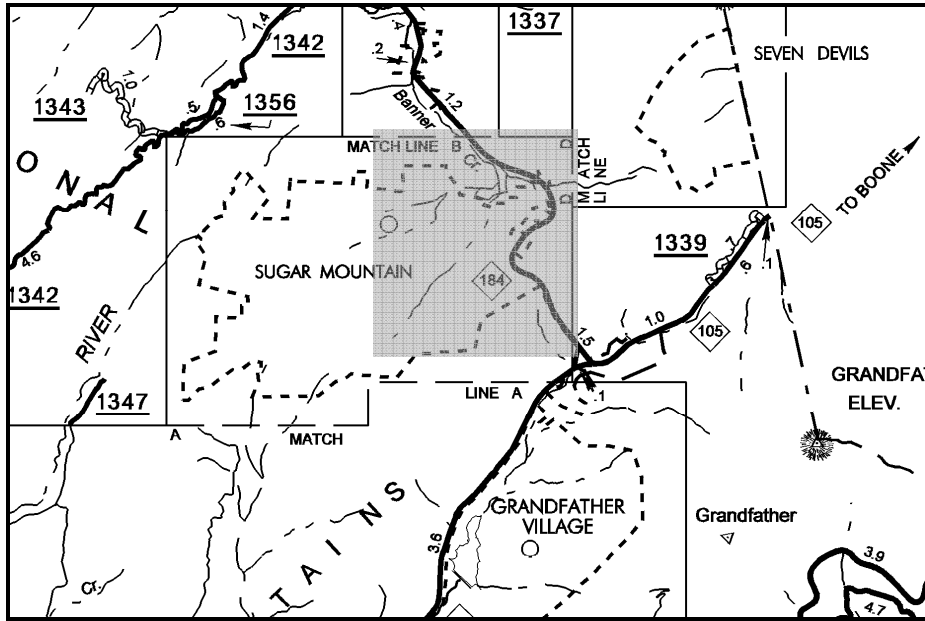
MAP NO.	COUNTY	DESCRIPTION	TOTAL SECTION LENGTH	STL BEAM GR (LFT) ACTUAL	SHOP CURVED (LFT)	GRAU TYPE 350 (EA)	AT-1 (EA)	TYPE III (MOD) (EA)	EXTRA LENGTH POSTS (EA)	REMOVE EXISTING GR (LFT)	REMARKS
1	Avery	NC 184 - 0.95 miles West of Intersection NC 105 on Left	750.00	650.00		2					
2	Avery	NC 184 - At Intersection of SR 1340 (Norwood Hollow Road) on Left	358.75	300.00		1	1				
3	Caldwell	US 64 / NC 90 - Across from SR 1811 (Fields Place Road)	1,850.00	1,750.00		2				1,739.00	Remove Existing GR and Replace with New GR
4	Watauga	US 321/421 North - 0.75 miles South of SR 1385 (Lynn Hill Road) on Left	310.00	210.00		2					
5	Watauga	NC 194 North - 0.60 miles from SR 1339 (Hopewell Church Road) on Left	200.00	100.00		2					
6	Watauga	NC 105 South - 0.15 miles from Foscoe Fire Department on Left	400.00	300.00		2					
7	Watauga	NC 194 North - 1.1 miles North of US 221/421 on Right	350.00	250.00		2					
8	Watauga	NC 194 North - 0.5 miles South of Ashe County Line on Left	200.00	100.00		2					
9	Ashe	NC 163 - 0.03 miles North of SR 1149 (Mt. Jefferson Road)	325.00	225.00		2					At BRE Substation
10	Ashe	NC 88 - 0.40 miles East of SR 1614 (Laurel Fork Road)	787.50	650.00	50.00	1	2	1			Use Type III (MOD) for Church Rail (Bridge) Shop Curve at Driveway
11	Ashe	NC 88 - 1.23 miles East of SR 1627 (Frank McMillan Road)	200.00	100.00		2					
12	Ashe	NC 88 - 1.35 miles East of SR 1627 (Frank McMillan Road)	425.00	325.00		2					
13	Wilkes	NC 18 - 0.06 miles South of Allegheny County Line - LT Side Southbound	400.00	300.00		2					
14	Wilkes	NC 18 - 0.2 miles South of Allegheny County Line - LT Side Southbound	350.00	250.00		2					
15	Wilkes	NC 18 - 0.29 miles South of Allegheny County Line - LT Side Southbound	350.00	200.00		2					
16	Wilkes	NC 18 - 0.5 miles South of Allegheny County Line LT Side Southbound	250.00	150.00		2					
17	Wilkes	NC 18 - 0.38 miles South of SR 1729 (Old NC 18)	175.00	75.00		2					
18	Surry	NC 89 - East of SR 1799 (Woodville Road)	850.00	750.00		2				400.00	Remove Existing GR and Replace with New GR. Extend GR additional 350'
19	Surry	NC 89 - West of SR 1785 (Snody Road)	475.00	375.00		2			5		

MAP NO.	COUNTY	DESCRIPTION	TOTAL SECTION LENGTH		STL BEAM GR (LFT)		SHOP CURVED (LF)	GRAU TYPE 350 (EA)		AT-1 (EA)	TYPE III (MOD) (EA)	EXTRA LENGTH POSTS (EA)		REMOVE EXISTING GR (LFT)		REMARKS		
			LENGTH	475.00	ACTUAL	375.00		TYPE 350	2			LENGTH	POSTS (EA)	GR (LFT)	GR (LFT)			
20	Yadkin	NC 67 East - 0.78 miles East of SR 1539 (RT) NC 67 East - 0.78 miles East of SR 1539 (LT)	475.00	475.00	375.00	375.00		2	2									
21	Yadkin	NC 67 East - 1.0 miles East of SR 1539 (RT) NC 67 East - 1.0 miles East of SR 1539 (LT)	350.00	350.00	250.00	250.00		2	2									
22	Alleghany	NC 18 - 345' South of SR 1613 (Tony Miller Road) - LT Side Southbound	525.00	525.00	425.00	425.00		2	2									
23	Alleghany	NC 18 - 300' South of NC 88 (RT) NC 18 - 300' South of NC 88 (LT) Over Cranberry Creek	383.75 325.00	383.75 325.00	300.00 225.00	300.00 225.00	25.00	1 2	1 2	1			10			West Side at Private Drive East Side See Std. 862.01 Sht 10 of 12 25'-0" Clear Span		
NOTE: Extra Length Guardrail Posts to be used at locations as required and approved by the Engineer.																		
					STL BEAM GR (LFT)		SHOP CURVED (LFT)		GRAU TYPE 350 (EA)		AT-1 (EA)		TYPE III (MOD) (EA)		EXTRA LENGTH POSTS (EA)		REMOVE EXISTING GR (LFT)	
					9,260.00		75.00		49.00		4.00		1.00		75.00		2,139.00	
PROJECT TOTALS:																		

Vicinity Map

Avery County

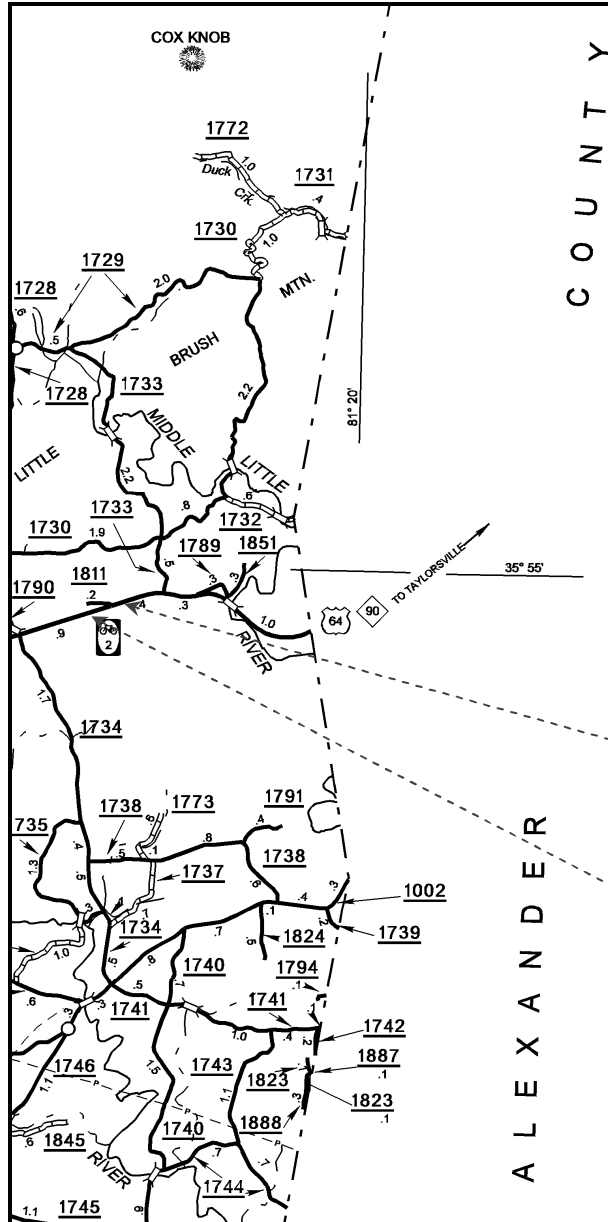
NC 184 – Maps 1 & 2



Vicinity Map

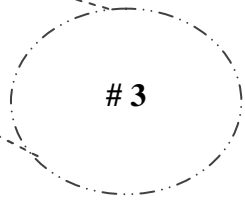
Caldwell County

US 64/NC 90 – Map 3



C O U N T Y

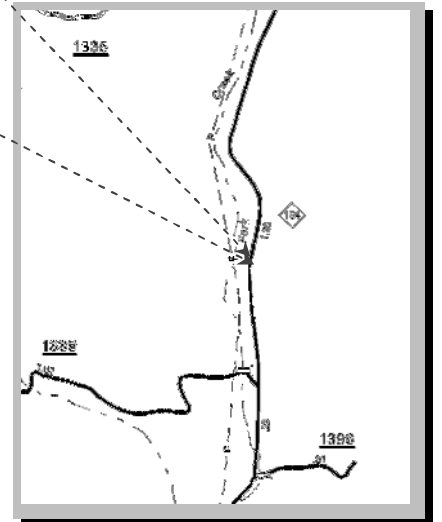
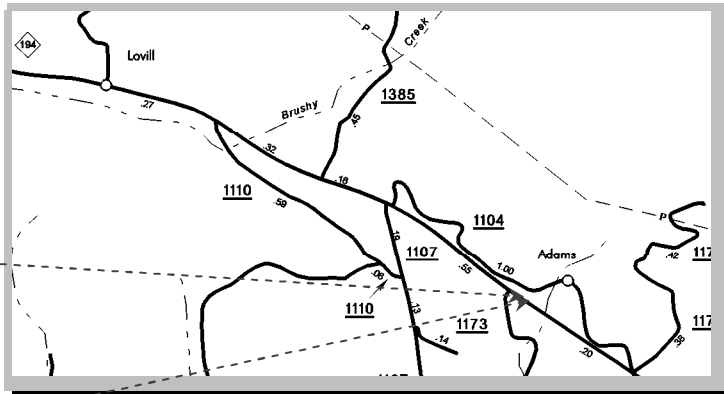
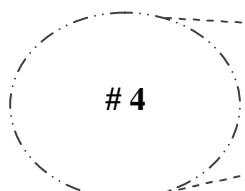
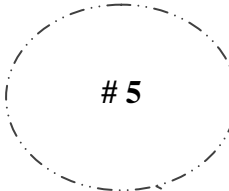
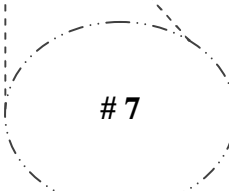
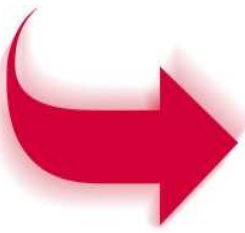
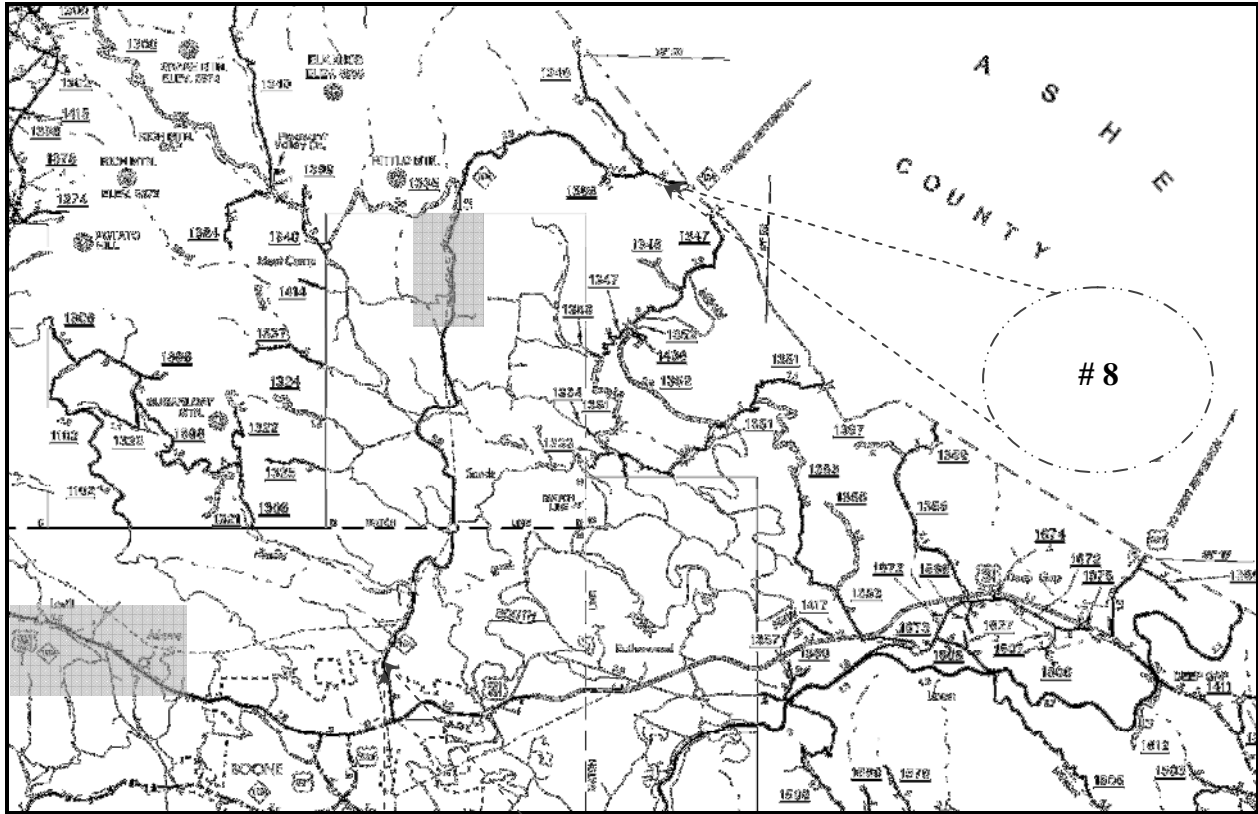
A L E X A N D E R



Vicinity Map

Watauga County

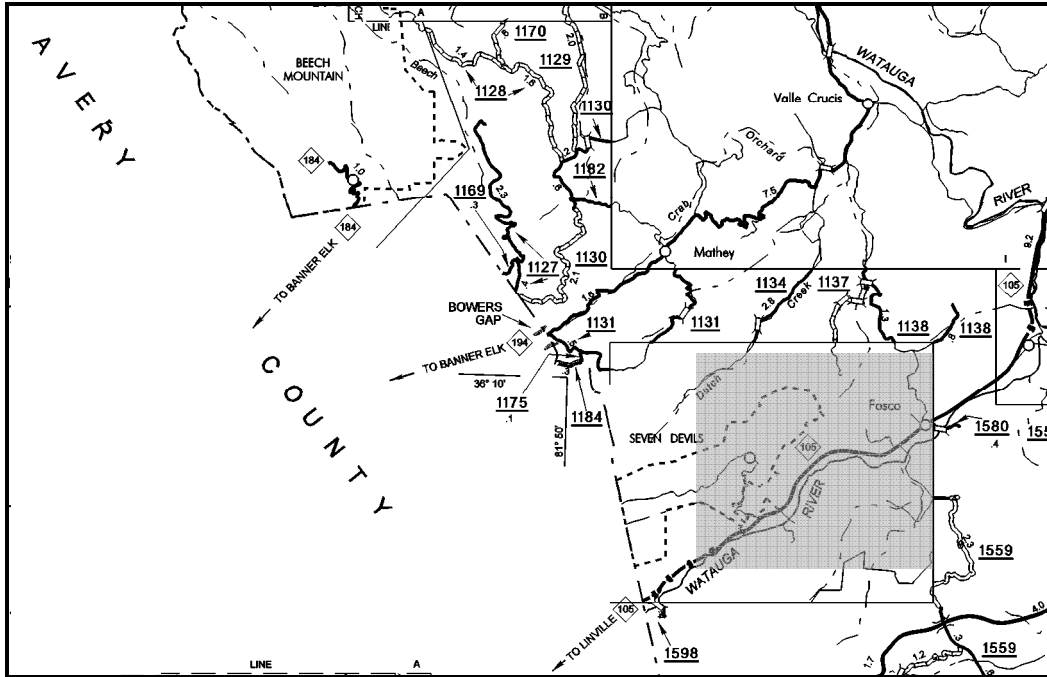
US 321/421 & NC 194 – Maps 4, 5, 7, & 8



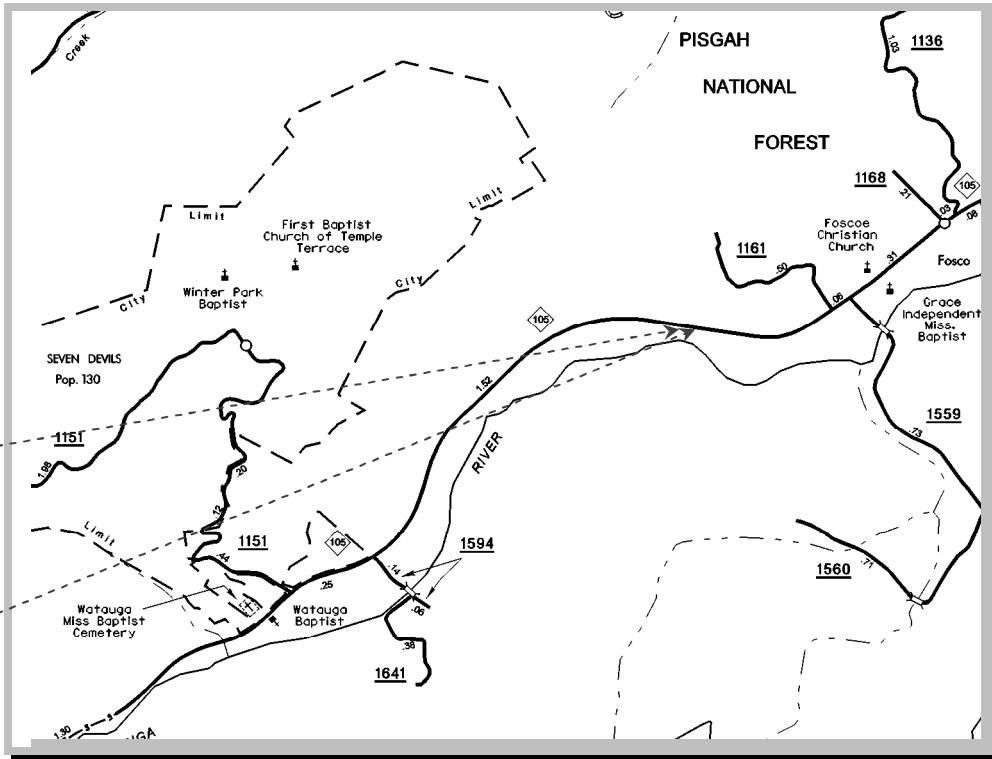
Vicinity Map

Watauga County

NC 105 – Map 6



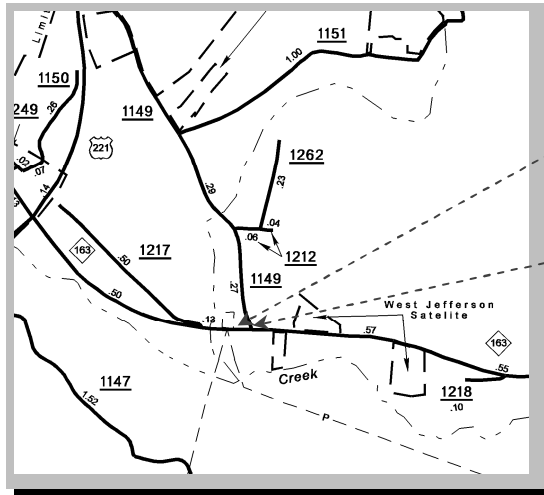
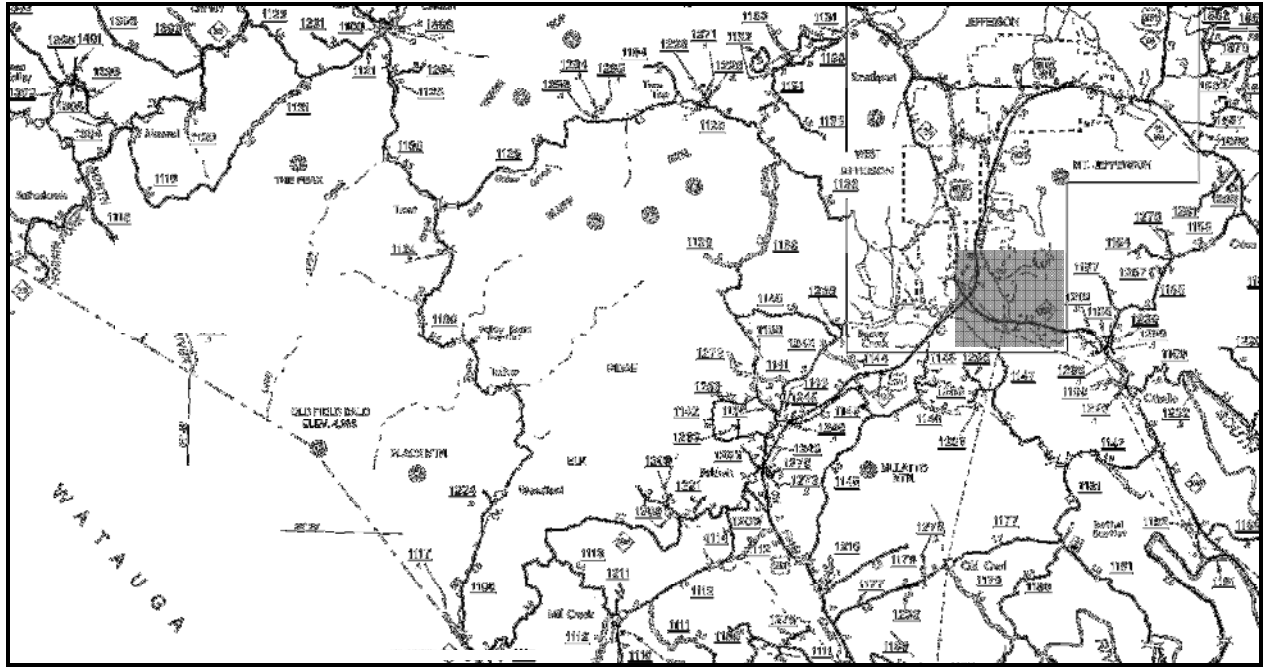
6



Vicinity Map

Ashe County

NC 163 – Map 9

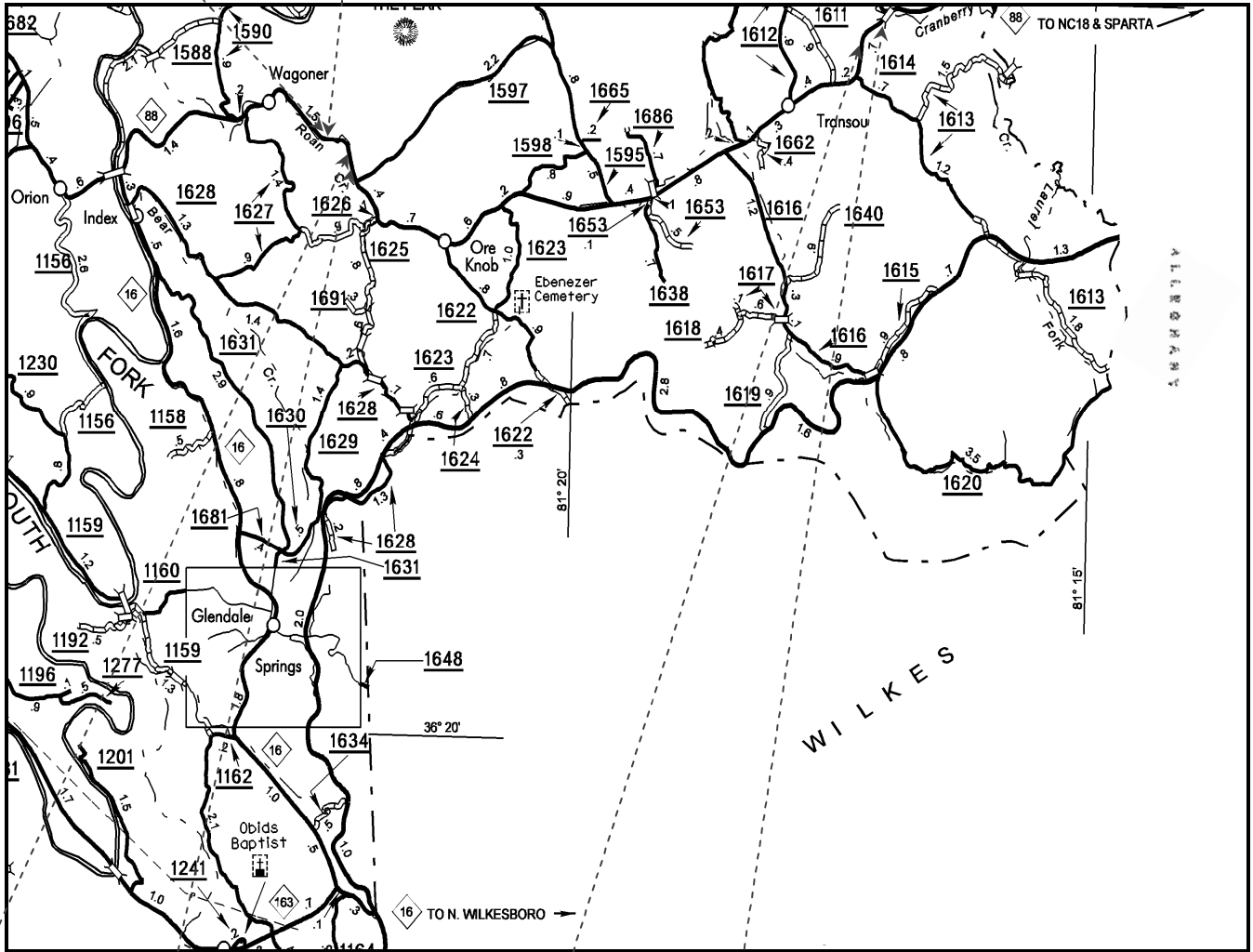


Vicinity Map

Ashe County

NC 88– Map 10, 11 & 12

11



12

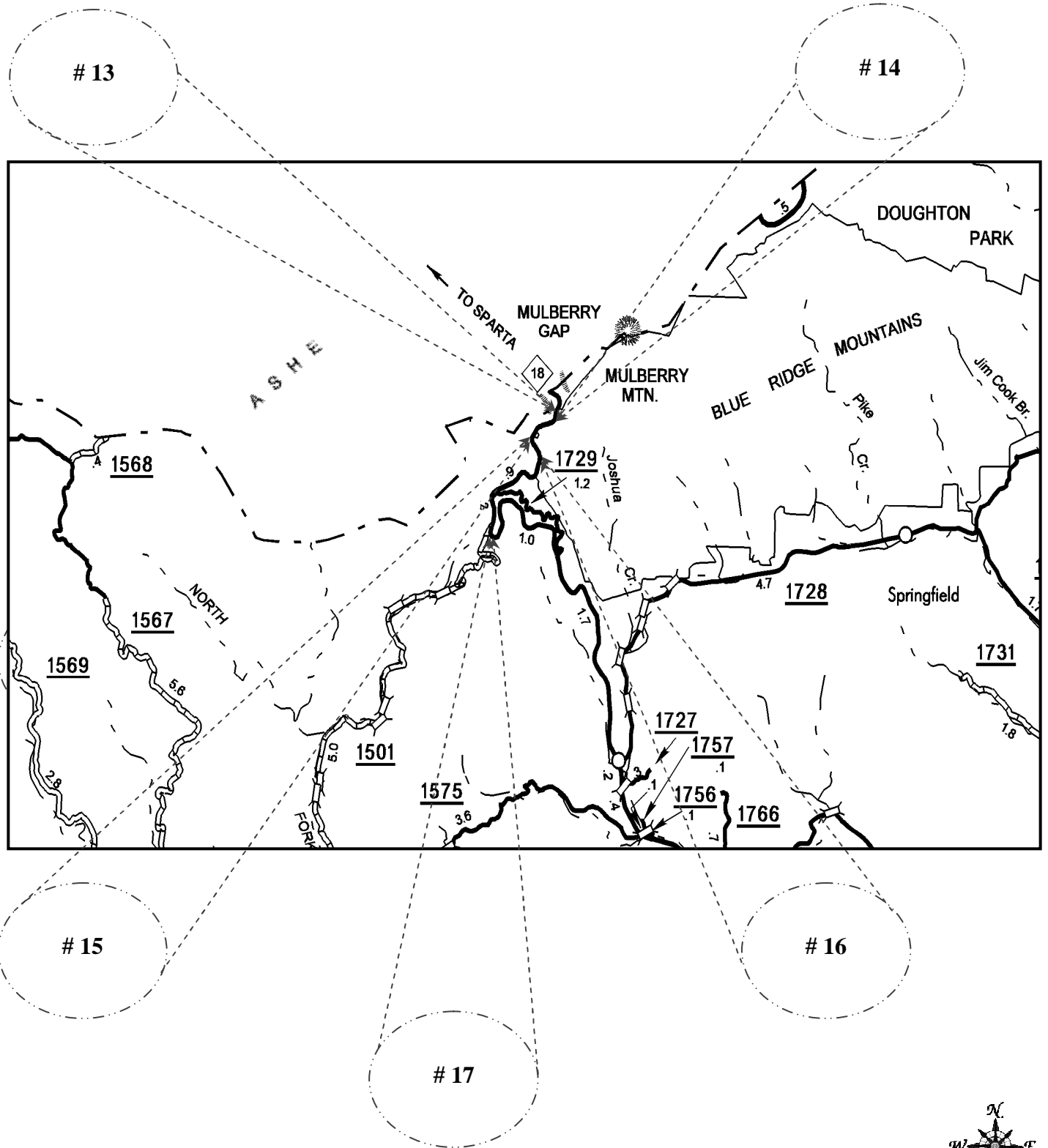
10



Vicinity Map

Wilkes County

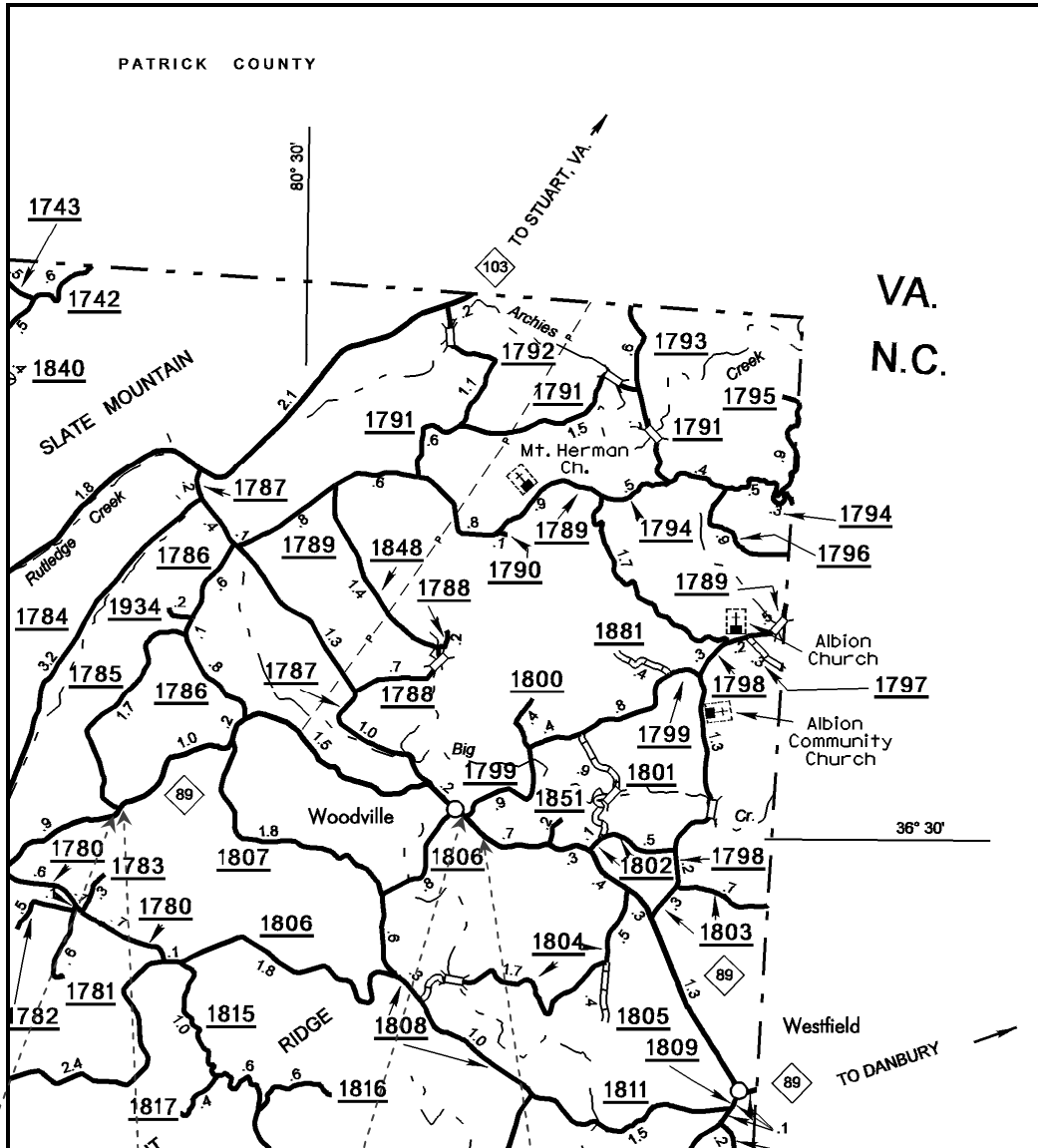
NC 18 – Map 13, 14, 15, 16 & 17



Vicinity Map

Surry County

NC 89 – Maps 18 & 19



19

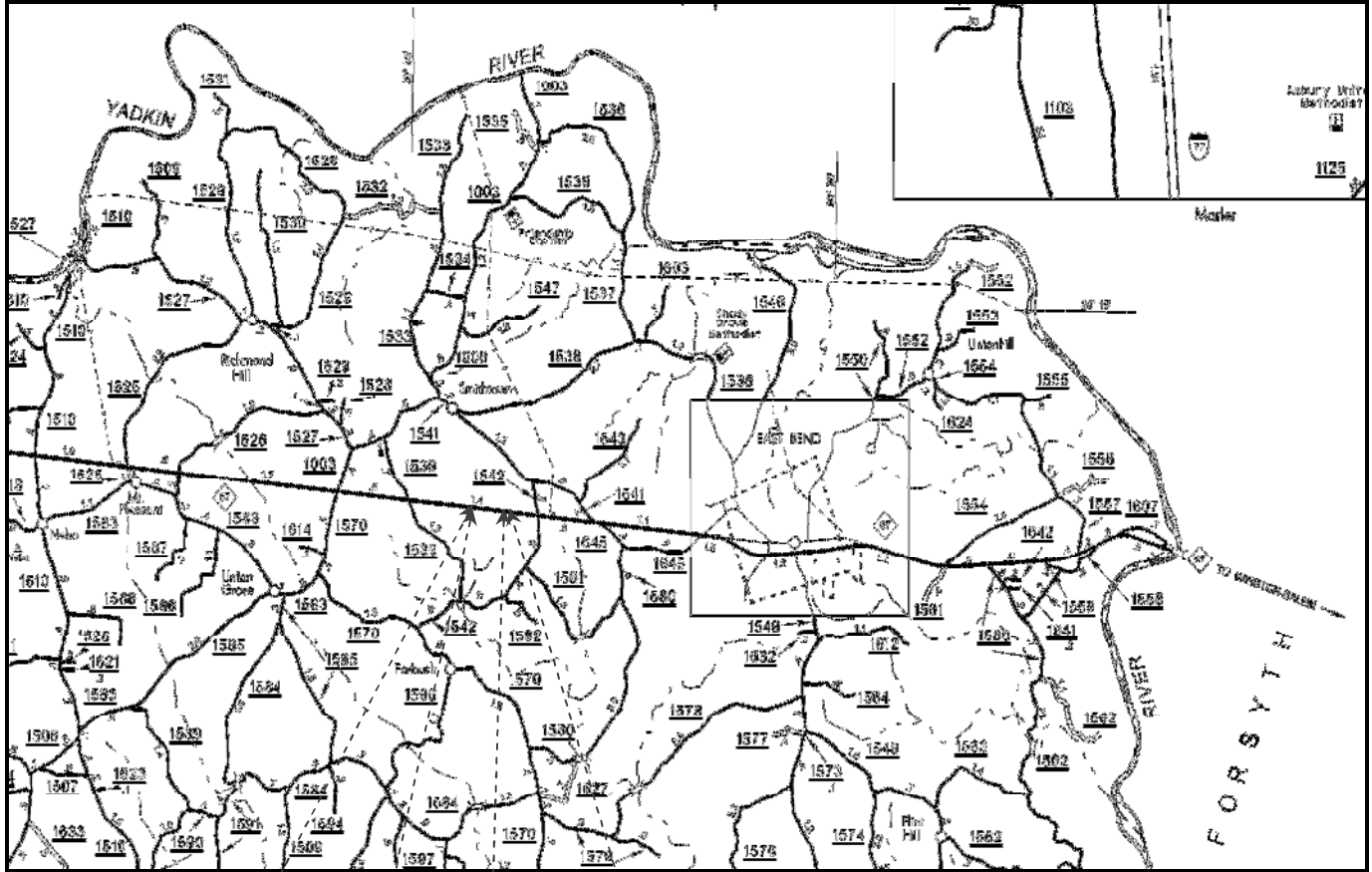
18



Vicinity Map

Yadkin County

NC 67 East – Maps 20 & 21



20

21

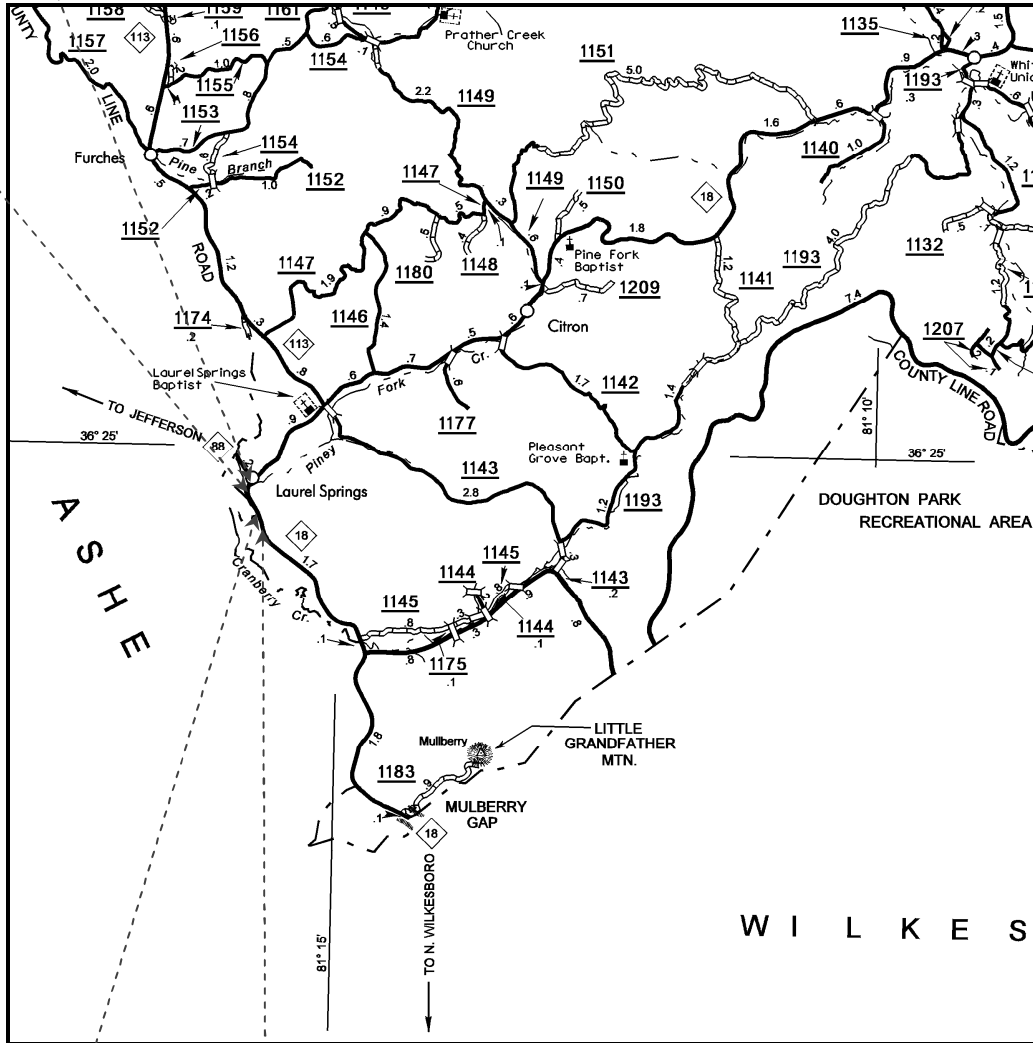


Vicinity Map

Alleghany County

NC 18 – Maps 22 & 23

23



22



